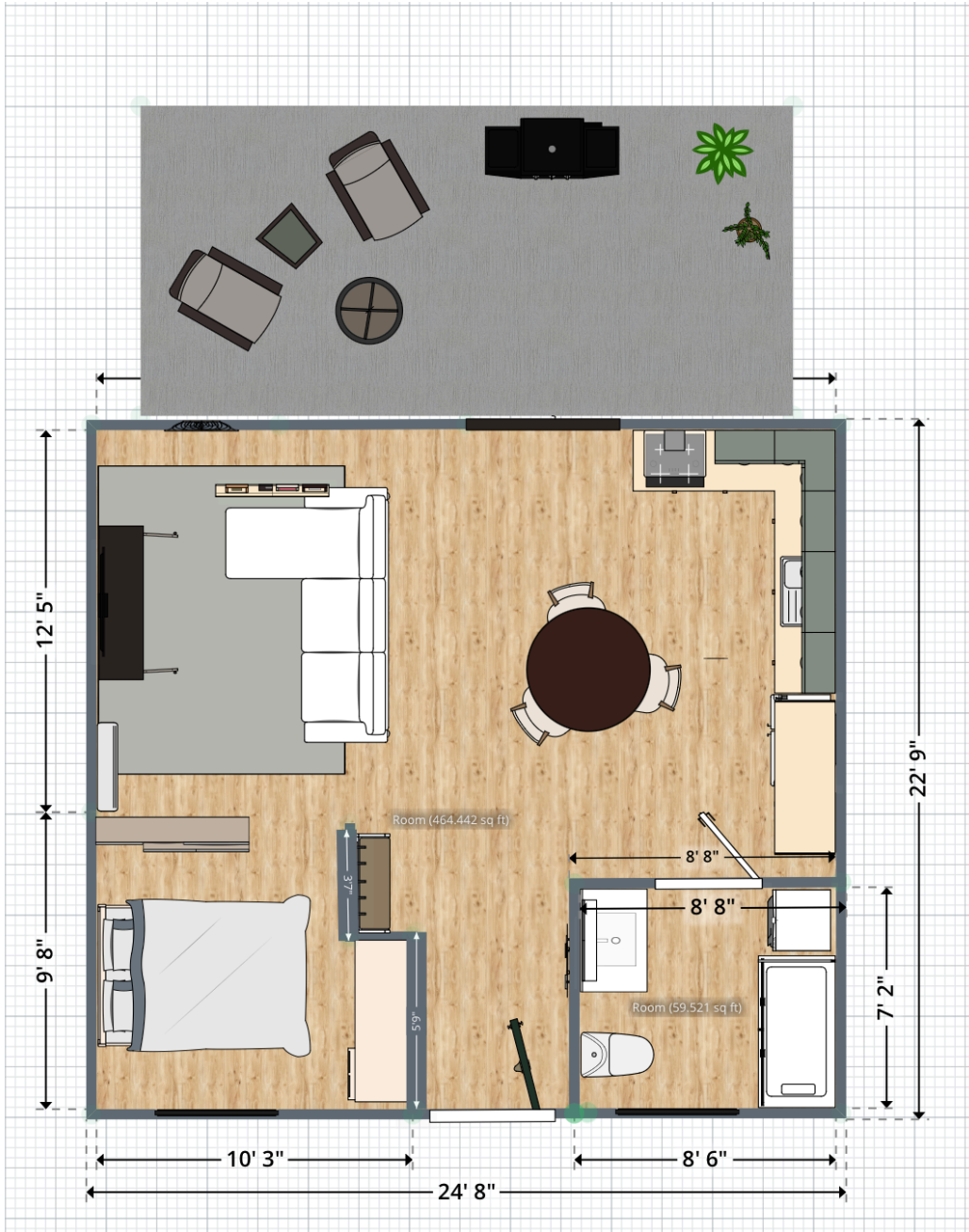


"Garage to Getaway"

Transforming an Existing Garage for comfort and convenience

KEY FEATURES:

- Uses existing garage floor plan with interior walls of 24.' x 22' for maximum cost savings.
- Bathroom features walk-in shower, 40" Vanity, and full-sized stackable washer/dryer.
- Kitchen features cabinetry, full-sized fridge, broom closet, and room for a 48" round table.
- All plumbing is roughed in towards front of the ADU, for ease in tying in to Main Line.
- Open living area has 8'x10' area rug, full sofa, and TV console with electric fireplace.
- Bed area features a bookshelf partition, and built-in closet/dresser system.
- Entry hallway has hooks and shoe bench.
- Back slider doors lead out to patio area.



Taryn Kobernat
309-944-7437

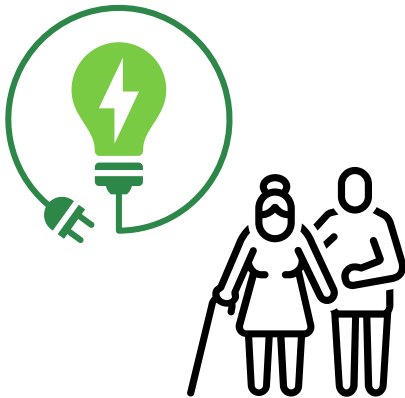
EXTERIOR TIPS, TRICKS, & IDEAS

- Use complimentary siding on the exterior, if you can't match it exactly to the existing home.



- Smaller "basement"-style windows are a cost-effective (vs custom windows) way to let in natural light, without taking up much needed interior wall space. These windows are perfectly spaced for the bedroom and bathroom. Add a planter or address sign to balance them out from the exterior view.

"SMART" AND ACCESSIBLE IDEAS:



- Ensure walls are adequately insulated.
- Install energy-efficient mini-split system (of at least 12,000 BTU).
- TV Console doubles as an electric heater.
- Use high-efficiency toilet and appliances.
- Use a smart system to control temperature, lighting, and to unlock the front door.
- For easier accessibility for all walks of life: Use lever-style door knobs, sink faucets, and shower controls. Remember to install a hand shower feature, and add grab bars where needed.
- This unit has a 36" opening for bathroom door, and bedroom entry.
- Use non-slippery flooring throughout.



VIEW FROM BACK PATIO DOOR, TOWARDS ENTRY DOOR



VIEW FROM LIVING AREA TOWARDS KITCHEN AND CLOSED BATHROOM DOOR



VIEW FROM LIVING AREA TOWARDS BEDROOM AREA WITH BOOKSHELF PARTITION (AND MINI-SPLIT VIEW)



AERIAL VIEW OF BATHROOM



VIEW FROM ENTRY HALLWAY



VIEW OF BACK PATIO. (PATIO IS
APPROXIMATELY 10' X 20')